

# 2024 Meetings, Events & Group Tour Information

---

[CambridgeUSA.org](https://CambridgeUSA.org)  
[@CambridgeUSA](https://www.instagram.com/CambridgeUSA)

[Candice Beaulieu](mailto:CBeaulieu@CambridgeUSA.org), Marketing Communications Director  
[CBeaulieu@CambridgeUSA.org](mailto:CBeaulieu@CambridgeUSA.org)

CAMBRIDGE CAMBRIDGE CAMBRIDGE CAMBRIDGE CAMBRIDGE  
OFFICE FOR TOURISM

# Welcome to Cambridge, Massachusetts!

Host your meeting or schedule your group outing in Cambridge, where Old World meets New Age in a mesmerizing blend of history and technology!

- <8 miles from Boston Logan International Airport
- <3 miles from Downtown Boston
- 3,700+ hotel rooms, the region's largest hotel inventory outside Boston
- 15,600+ square feet of meeting space available
- 325+ restaurants ranging from gourmet burgers, innovative fusion cuisine, and James Beard Award winning Chefs

Motivate event attendees by hosting your meeting in the birthplace of higher education. Cambridge is home to both Harvard University and the Massachusetts Institute of Technology (MIT), with both schools offering year-round public tours of their iconic and historic campuses and fascinating world-renowned museums meant to inspire. Packed with youthful vitality and international flair, and located just on the other side of the Charles River from Boston, Cambridge is the perfect place for your next meeting, group dinner or event!

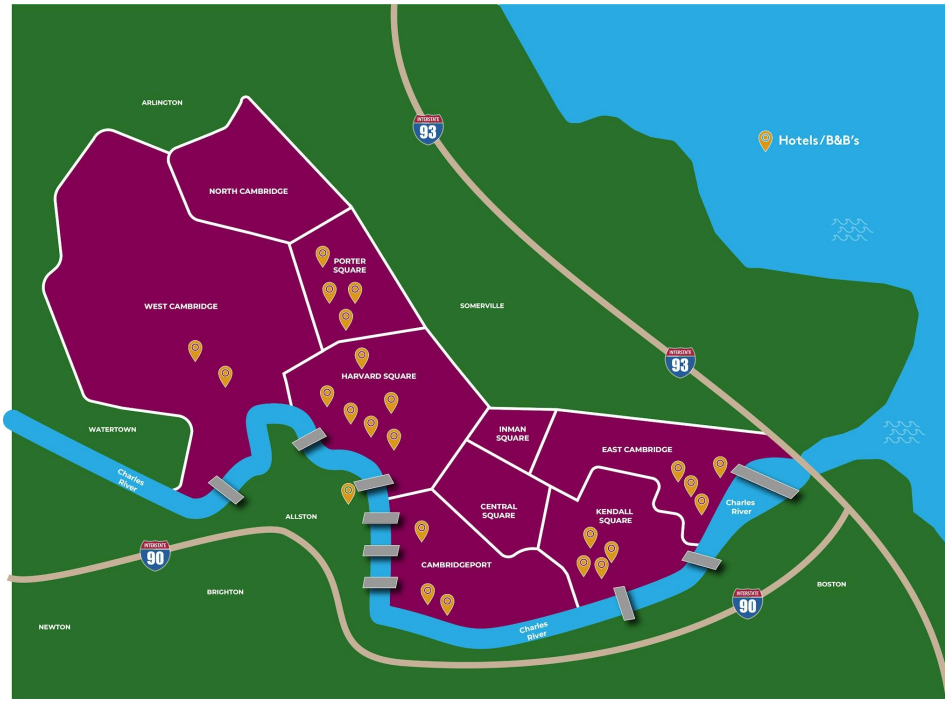
*Looking for photos to promote Cambridge on your own marketing materials? Find our favorite photos [here](#) for your use!*



# Neighborhood Maps

CAMBRIDGE CAMBRIDGE CAMBRIDGE CAMBRIDGE CAMBRIDGE

OFFICE FOR TOURISM



Find more information on our website!

- [Neighborhood Information](#)
- [Getting Around](#)
- [Visitor Center](#), located in Harvard Square and open daily from 9am - 5pm

# Sample Itineraries

Find more [here](#)

CAMBRIDGE CAMBRIDGE CAMBRIDGE CAMBRIDGE CAMBRIDGE

OFFICE FOR TOURISM

# One Day in Cambridge

## **Where to Start:**

Begin your day in Harvard Square, Cambridge's most famous square. The Red Line subway delivers you into the heart of the iconic neighborhood. When you're ready to see the sights, walk along "Tory Row" on elegant Brattle Street and visit the [Longfellow House Washington's Headquarters](#). Or, opt to take a short bus ride or walk to the 175 acre [Mount Auburn Cemetery](#), the first garden cemetery in the US. Then join an official student led [Harvard University Tour](#) or simply stroll through Harvard Yard and take in the beautiful and historic campus.

## **In the Afternoon:**

The museums in Cambridge cannot be missed, and are plentiful. Hop back on the Red Line and head to Kendall Square, home to the Massachusetts Institute of Technology (MIT). Enjoy an official [tour of the MIT campus](#), also student led, or visit the newly reimagined [MIT Museum](#) offering exhibits, programming and hands-on-activities.

Or, see Boston and Cambridge from a new perspective: the Charles River. [Paddle Boston Canoe & Kayak](#) offers guided tours and rentals of kayaks, canoes or paddleboards. If relaxing on the water is more your speed, enjoy a fully narrated sightseeing cruise with the [Charles River Boat Company](#), departing from the Lechmere Canal Park at [Cambridgeside](#) in East Cambridge.

## **After Dark:**

With over 300 restaurants to choose from, Cambridge's dining scene truly provides something for everyone whether you are in the mood an exotic dish or more traditional New England fare. Or, enjoy a [Food Tour](#) of Harvard Square, Central Square, or Kendall Square . After dinner, don't miss the live music and nightlife venues like the [Middle East](#) or [Cantab Lounge](#) that call Central Square home.



# Family Fun in Cambridge

## **Where to Start:**

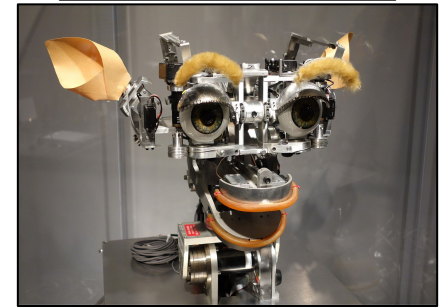
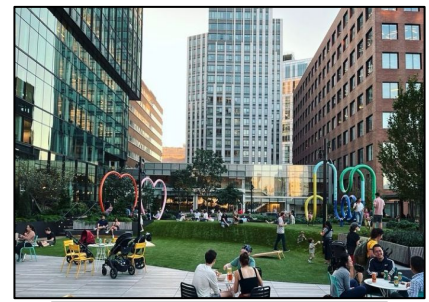
You could easily make an entire day out of a visit to the [Museum of Science](#) (while their address states Boston, the museum is actually located on the Cambridge side of the Charles River!) but a great, quieter alternative for the kiddos who are into all things STEM is the [MIT Museum](#). Or, enjoy making your way alongside the Charles River on Memorial Drive. From 11 a.m.-7 p.m. every Sunday from the end of April until the beginning of November Memorial Drive is closed to vehicular traffic, making for an easy and kid-friendly walk or bike ride to [Magazine Beach](#), featuring lots of shaded picnic areas, a park nature center, plus an outdoor splash pad and olympic sized swimming pool during the summer months.

## **In the Afternoon:**

Treat yourself to an afternoon ice cream at one of Cambridge's famous ice cream shops - [Toscanini's](#) or [Christina's Homemade Ice Cream](#). Get creative by visiting [Made by Me](#), a no-reservations-required-all-ages pottery studio where you can paint mugs, bowls and more. And, while your kiddos may not be thinking about college, take a stroll thru the beautiful and historic Harvard Yard at Harvard University.

## **After Dark:**

Get one last peek at Cambridge and Boston from a different perspective - the Charles River. [Charles River Boat Company](#) offers different sightseeing tours, including a great sunset cruise. Or, check out the schedule of free events at the [Urban Roof Garden](#) in Kendall Square or [Cambridge Crossing](#) in East Cambridge, both of which are known for their family friendly events and outdoor movie nights.



# History Lovers

## **Where to Start:**

Cambridge is known as the official birthplace of higher education in America, so don't miss your opportunity to take an official student led [Harvard University Tour](#) and take in all the historic campus, founded in 1636, has to offer.

## **In the Afternoon:**

After perusing all Harvard Square has to offer, stop for lunch at [Harvest](#), one of former resident Julia Child's favorite Cambridge restaurants. Julia lived in Cambridge from 1961 - 2001, and transformed her kitchen into the iconic set where her television show was filmed. (Her home - and famous kitchen - are now privately owned and not open to the public.)

Take a post-lunch stroll down Brattle Street and walk along "Tory Row" and visit the [Longfellow House Washington's Headquarters](#) and Cambridge Common where George Washington first took command of the Revolutionary War troops on July 3, 1775. Or, enjoy [Mount Auburn Cemetery](#), a 175 acre garden cemetery established in 1831 and the first of its kind in the US.

## **After Dark:**

Visit the Old Cambridge Burying Ground and Samuel Stedman Icehouse on a [Harvard Square Ghost Tour](#), or book a tour from the [Charles River Boat Company](#) and enjoy a guided Architecture Boat Cruise leaving from the canal behind [Cambridgeside](#) in East Cambridge.





# Science & Innovation Lovers

## **Where to Start:**

Enjoy a guided tour of the [Innovation Trail](#), a fantastic way to experience, learn about and be inspired by four centuries of world-changing breakthroughs and inventions that took place right here in Cambridge. Focused primarily on what happened in Cambridge post-American Revolution, you'll learn how Cambridge is the birthplace of the Tootsie Roll, Polaroid photos, the COVID-19 vaccine and explore the "Most Innovative Square Mile on the Planet"!

## **In the Afternoon:**

Enjoy lunch at the [Miracle of Science Bar + Kitchen](#) in Kendall Square, followed by a student led [MIT Tour](#), or visit the [MIT Museum](#) and [Broad Discovery Center](#), a free museum about biomedical research.

Or, hop on the red line and head down to Harvard Square where you can visit Harvard University's [Collection of Historical Scientific Instruments](#) or [Museum of Natural History](#).

## **After Dark:**

Head back to East Cambridge and visit the [Museum of Science](#) where you can experience the Mugar Omni Theatre, Charles Hayden Planetarium or their newest industry-leading 4D theater.



# Hotels

CAMBRIDGE CAMBRIDGE CAMBRIDGE CAMBRIDGE CAMBRIDGE

OFFICE FOR TOURISM

# AC Hotel by Marriott Boston Cambridge



**Neighborhood:** North Cambridge

**Address:** 10 Acorn Park Drive, Cambridge, MA 02140

**Phone:** 617-876-6190

**Website:** [achotelbostoncambridge.com](http://achotelbostoncambridge.com)

**Number of Rooms:** 150

**On Site Dining:** AC Kitchen, AC Lounge

**Meeting Space:** 5 Event Rooms / 2,579 square feet



Experience this AC Hotel located steps away from the Alewife T Station and minutes from Downtown Cambridge. From a European-inspired continental breakfast to the buzz of the lounge, the AC Hotel stay is designed for those looking to experience the city in a new way. It blends contemporary style with cosmopolitan sophistication.

The innovative lobby, tapas-style lounge and media salons for small, impromptu meetings are made with the modern business traveler in mind. Meeting space features various pre-function and outdoor areas.



# Boston Marriott Cambridge



**Neighborhood:** Kendall Square

**Address:** 50 Broadway, Cambridge, MA 0212

**Phone:** 617-494-6600

**Website:** [marriottcambridge.com](http://marriottcambridge.com)

**Number of Rooms:** 433 Rooms / 12 Suites

**On Site Dining:** M Club Restaurant & Lounge

**Meeting Space:** 12 Event Rooms / 12,896 square feet

Boston Marriott Cambridge exudes modern style and exceptional service in the unparalleled location of trendy Kendall Square. Just steps from the Kendall Square T station on the Red Line, the hotel offers easy access to the rest of Cambridge but is also just two subway stops away from Boston. Guest rooms and suites offer spacious bedroom and bathroom areas, ergonomic work spaces and high speed internet access.

Plan meetings or events in nearly 13,000 square feet of versatile event space, and then unwind in a modern guest room or suite with great views of Boston and the Charles River.





# The Charles Hotel



**Neighborhood:** Harvard Square

**Address:** 1 Bennett Street, Cambridge, MA 02138

**Phone:** 800-882-1818

**Website:** [charleshotel.com](http://charleshotel.com)

**Number of Rooms:** 294 Rooms / 45 Suites

**On Site Dining:** Henrietta's Table, Regattabar, Noir, Bar Enza, Garden Bar

**Meeting Space:** 17 Event Rooms / 18,000 square feet



Located in the heart of Harvard Square, The Charles Hotel is a member of Preferred Hotels and Resorts and is a recipient of the AAA Four Diamond award. With its classic New England design, unpretentious service, new technology and one-of-a-kind accommodations, The Charles Hotel is ideal for both business and travel leisure.

# The Charles Hotel

<i>Meeting Room</i>	<i>Square Ft.</i>	<i>Sq. Meters</i>	<i>Theatre</i>	<i>Classroom</i>	<i>Reception</i>	<i>Banquet</i>	<i>Conference</i>
Kennedy	1881	175	160	70	150	120	40
Brattle	864	80	60	30	60	50	20
Longfellow	1568	146	120	55	125	100	36
Hamilton	418	39	40	18	40	30	14
Eliot	228	21	-	-	-	8	8
Ballroom	4730	439	550	300	600	400	-
Lowell	1591	148	140	80	175	120	-
Conant	1591	148	140	80	175	120	-
Wadsworth A/B	1548	144	50	40	75	60	-
Comstock	702	65	50	20	50	40	22
Agassiz	696	65	50	25	50	40	22
Compton	540	50	50	25	40	30	20
Rogers	504	47	40	20	40	30	20
Stratton	504	47	40	20	40	30	20
Doriot Board Room	260	24	-	-	-	-	10
Walker Board Room	260	24	-	-	-	12	10
Regattabar	2805	261	200	100	225	170	40
	<b>20690</b>	<b>1922</b>					



# Courtyard by Marriott Boston-Cambridge



**Neighborhood:** Cambridgeport

**Address:** 777 Memorial Drive, Cambridge, MA 02139

**Phone:** 866-236-2472

**Website:** [cambridgecourtyard.com](http://cambridgecourtyard.com)

**Number of Rooms:** 197 Rooms / 6 Suites

**On Site Dining:** Bisuteki Tokyo Japanese Steakhouse & Sushi Bar

**Meeting Space:** 8 Event Rooms / 6,722 square feet

Nestled on the banks of the Charles River sits the Courtyard by Marriott Boston-Cambridge. Whether you're visiting for work or pleasure, discover modern comforts for today's traveler. Treat yourself to on-site dining at Bisuteki Tokyo and then retreat to your spacious room or suite overlooking the bright Boston skyline. Or, squeeze in a workout at the 24 hour fitness center.



Host meeting or event one of our eight event rooms and let our professional caterers plan the perfect menu for the event. The Waterfront Ballroom space allows for sweeping views of the Charles River with floor to ceiling windows.

# Courtyard by Marriott Boston-Cambridge

<i>Meeting Room</i>	<i>Square Ft.</i>	<i>Sq. Meters</i>	<i>Theatre</i>	<i>Classroom</i>	<i>Reception</i>	<i>Banquet</i>	<i>Conference</i>
Executive Boardroom	240	22	-	-	-	-	10
Waterfront Ballroom	2652	246	250	150	320	190	90
Waterfront Ballroom Pre-Function	855	79	-	-	-	-	-
Charles River Room	902	84	-	-	150	150	-
Bistro Lounge	902	84	-	-	-	-	-
River Room Pre-Function	855	79	-	-	-	-	-
Harvard Study Square	212	20	-	-	-	-	8
	<b>6618</b>	<b>615</b>					

# DoubleTree Suites by Hilton Boston



**Neighborhood:** Cambridgeport

**Address:** 400 Soldiers Field Road, Boston, MA 02134

**Phone:** 800-222-8733

**Website:** [hilton.com](https://www.hilton.com)

**Number of Rooms:** 308 Suites

**On Site Dining:** Boathouse 400, Fusion Lounge, Scullers Jazz Club

**Meeting Space:** 7 Event Rooms / 8,325 square feet

Located along the scenic Charles River, the DoubleTree Suites by Hilton Boston overlook both the Boston and Cambridge skylines. The hotel offers easy access to Harvard Square as well as two of the area's major thoroughfares: the Massachusetts Turnpike (I-90) and Storrow Drive. You can even take a complimentary shuttle to Harvard Square and downtown Boston. Enjoy on site parking, two restaurants and a business center. Scullers Jazz Club has been voted Boston's #1 Jazz Club by the *Improper Bostonian* and is located on the first floor of the hotel.

Meetings and event planners have their choice between 7 different spaces and over 8,300 square feet of space.

# DoubleTree Suites by Hilton Boston

<b>Meeting Room</b>	<b>Square Ft.</b>	<b>Sq. Meters</b>	<b>Theatre</b>	<b>Classroom</b>	<b>Reception</b>	<b>Banquet</b>
Charles River	2011	187	200	108	290	180
Roosevelt	1804	168	250	150	325	200
Scullers	1519	141	150	-	200	130
Eliot	962	89	80	40	100	80
Anderson	725	67	50	30	50	50
Fiedler	725	67	50	30	50	50
Weeks	552	51	-	-	-	-
Harvard	490	46	-	-	25	-
Rooftop Terrace	-	-	-	-	100	-

# Fairfield Inn & Suites Boston Cambridge



**Neighborhood:** East Cambridge

**Address:** 215 Monsignor O'Brien Highway, Cambridge, Ma 02141

**Phone:** 617-621-1999

**Website:** [fairfieldbostoncambridge.com](http://fairfieldbostoncambridge.com)

**Number of Rooms:** 123 Rooms

**On Site Dining:** N/A

**Meeting Space:** N/A

At Fairfield Inn & Suites by Marriott Boston Cambridge, smart, beautifully appointed guest rooms are perfectly matched for today's connected, tech-savvy lifestyles. Experience ergonomic workstations, sleek design touches and modern baths that have granite countertops and glass-walled showers. You can also expect public transit options right around the corner and a complimentary breakfast buffet.

Fairfield Inn & Suites Boston Cambridge makes it easy to travel like you live: entirely on your own terms.



# Freepoint Hotel



**Neighborhood:** West Cambridge

**Address:** 220 Alewife Brook Parkway, Cambridge, Ma 02138

**Phone:** 617-491-8000

**Website:** [freepointhotel.com](http://freepointhotel.com)

**Number of Rooms:** 121 Rooms

**On Site Dining:** Freepoint Kitchen and Cocktails

**Meeting Space:** 3 Event Spaces

Freepoint Hotel puts guest within easy reach of Cambridge's most desirable attractions, restaurants and hubs for business and technology. The hotel gives guests a place where they can feel free to be themselves, while surrounded by chic design. One example is the the Freepoint Kitchen and Cocktails by Matthew Gaudet, which features global flavors and casual fare.

Freepoints amenities include a complimentary shuttle service, free WI-FI throughout the hotel and even a heated, secret garden with a firepit.



# Freepoint Hotel

<i>Meeting Room</i>	<i>Square Ft.</i>		<i>Theatre</i>	<i>Classroom</i>	<i>Reception</i>	<i>Banquet</i>
The Secret Garden	-		-	-	25	-
The Lounge	-		-	-	10	-
The Dining Room	-		-	-	10	-

# Hampton Inn Boston/Cambridge



**Neighborhood:** East Cambridge

**Address:** 191 Monsignor O'Brien Highway, Cambridge, Ma 02141

**Phone:** 617-494-5300

**Website:** [bostoncambridge.hamptoninn.com](http://bostoncambridge.hamptoninn.com)

**Number of Rooms:** 114 Rooms

**On Site Dining:** N/A

**Meeting Space:** N/A

The Hampton Inn Boston/Cambridge is a superior first class hotel that boasts highly personalized service coupled with elegantly styled guest rooms. It offers deluxe continental breakfast, high-speed internet access and parking - all free with your stay.

Just minutes from Boston and across from public transportation, the hotel makes traveling a breeze. Guests can conduct business and still have time to explore the historic treasures of Boston & Cambridge.





# Harvard Square Hotel



**Neighborhood:** Harvard Square

**Address:** 110 Mt. Auburn Street, Cambridge, Ma 02138

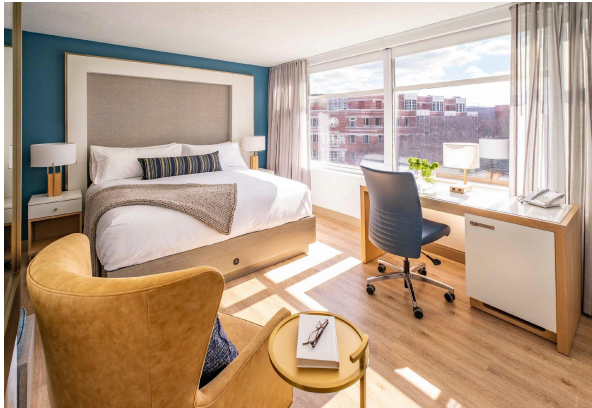
**Phone:** 800-458-5886

**Website:** [harvardsquarehotel.com](http://harvardsquarehotel.com)

**Number of Rooms:** 73 Rooms

**On Site Dining:** N/A

**Meeting Space:** N/A



Friendly, personalized service and modern amenities make Harvard Square Hotel an ideal retreat for business and leisure travelers. This boutique hotel's affordable guest rooms have sophisticated decor and top-notch features like mini-refrigerators, flat-screen TV's, sleek bathrooms and pillow-top beds. It's easy to stay productive thanks to property-wide WI-FI, spacious in-room work desks and a lobby cafe. Right outside, guests will find a self-parking garage.

Next to Harvard University and the Charles River, the hotel is surrounded by local shops, cafes and Harvard Square's nightlife. Downtown Boston is also less than ten minutes away.

# Holiday Inn Express & Suites



**Neighborhood:** East Cambridge

**Address:** 250 Monsignor O'Brien Highway, Cambridge, Ma 02141

**Phone:** 800-458-5886

**Website:** [hiecambbridge.com](http://hiecambbridge.com)

**Number of Rooms:** 98 Rooms / 14 Suites

**On Site Dining:** N/A

**Meeting Space:** N/A

Holiday Inn Express & Suites' convenient Cambridge location is just minutes from Downtown Boston via the train at nearby Lechmere Station. A complimentary American breakfast awaits your arrival. Indulge in the hotel's famous cinnamon rolls as well as a variety of hot and cold foods.

Our "Great Room" also has 24 hour coffee and complimentary cookies in the evening. All accommodations include a microwave, mini-fridge, coffee maker and high-speed wireless internet access.



# Hotel 1868



**Neighborhood:** Porter Square

**Address:** 1868 Massachusetts Ave, Cambridge, Ma 02140

**Phone:** 617-499-2998

**Website:** [hotel1868.com](http://hotel1868.com)

**Number of Rooms:** 50 Rooms

**On Site Dining:** N/A

**Meeting Space:** 1 Event Room

Hotel 1868 welcomes guests with a contemporary style, outstanding service, exception value and a location that's a stone's throw from the Porter Square Transit Station. Aesthetically influenced by the machine age and industrial design period, Hotel 1868 showcases well-thought-out accommodations. It has Serta Presidential queen beds, smart TV's and complimentary WI-FI. Before grabbing a coffee and pasty from next door's Cafe Nero, you can challenge yourself to a work out in the hotels fitness center. You can also create and collaborate in the hotel meeting room, which includes modern audiovisual facilities. When you step outside the hotel, explore all that Cambridge has to offer and enjoy easy access to Boston.



# Hotel 1868

<i>Meeting Room</i>	<i>Square Ft.</i>		<i>Theatre</i>	<i>Classroom</i>	<i>Reception</i>	<i>Banquet</i>	<i>Conference</i>
Meeting Room	250		-	-	-	-	10

# Hotel Veritas



**Neighborhood:** Harvard Square

**Address:** 1 Remington Street, Cambridge, Ma 02138

**Phone:** 617-520-5000

**Website:** [thehotelveritas.com](http://thehotelveritas.com)

**Number of Rooms:** 30 Rooms

**On Site Dining:** N/A

**Meeting Space:** N/A



This “sleek, pleasantly quirky hotel achieves what all boutique hotels strive for,” says *The Boston Globe*. “A place where small feels interesting and intimate, not limiting or lacking.” Located on the eastern edge of Harvard Square, Hotel Veritas offers intimate service in a cool Cantabrigian setting. The look and feel of Hotel Veritas is very current, but with a nod toward the hotel’s traditional and historic neighborhood.

Elegant guest rooms are designed with the fine detailing of an old New England residence. Furnishings are interesting contemporary pieces with rich fabrics and textures. Accommodations include internet access, domestic telephone calls, N'Espresso coffee, juices, sodas and bottled native water.

# Hyatt Regency Cambridge



**Neighborhood:** Cambridgeport

**Address:** 575 Memorial Drive, Cambridge, Ma 02139

**Phone:** 617-492-1234

**Website:** [cambridgehyatt.com](http://cambridgehyatt.com)

**Number of Rooms:** 470 Rooms

**On Site Dining:** Paperback Tavern, Paperback Provisions

**Meeting Space:** 16 Rooms / 25,000 square feet

The beauty of the Charles River doesn't stop at the end of the river - it extends 16 stories up with the Hyatt Regency Cambridge. This pyramid-shaped hotel is an iconic imprint on the famed Boston skyline. Enjoy a room with an outdoor balcony, some me-time on the hotel's sundeck and patio and regional cuisine at Paperback Tavern, with its spectacular river views.

The hotel also offers a complimentary shuttle to Kendall Square Train Station, a 24-hour fitness center and **a heated pool with a seasonal retractable roof.**



# The Kendall Hotel



**Neighborhood:** Kendall Square

**Address:** 350 Main Street, Cambridge, Ma 02142

**Phone:** 617-577-1300

**Website:** [kendallhotel.com](http://kendallhotel.com)

**Number of Rooms:** 73 Rooms / 4 Suites

**On Site Dining:** N/A

**Meeting Space:** 2 Event Rooms



The Kendall Hotel is located where Cambridge meets Boston: steps from the Kendall/MIT Transit Station. It offers everything the weekend or business traveler could need, including a touch of history. Built in 1895, the hotel was originally a Victorian Firehouse. Today a balance of old and new is evident throughout the hotel, including the wide variety of guest rooms or one-bedroom suites. All guest rooms have free Wi-Fi and elegant, antique furnishings. A breakfast buffet, wine hour in the rooftop retreat and use of Cambridge Athletic Club's facilities are included with your stay. For your business or social events, meeting rooms with tech capabilities are also available.



# The Kendall Hotel

<i>Meeting Room</i>	<i>Square Ft.</i>	<i>Sq. Meters</i>	<i>Theatre</i>	<i>Classroom</i>	<i>Reception</i>	<i>Banquet</i>	<i>Conference</i>
Americana	-	-	-	-	35	20	-
Engine 7	-	-	-	-	30	12	-

# Kimpton Marlowe Hotel



**Neighborhood:** East Cambridge

**Address:** 25 Edwin H. Land Blvd, Cambridge, Ma 02141

**Phone:** 800-825-7040

**Website:** [hotelmarlowe.com](http://hotelmarlowe.com)

**Number of Rooms:** 222 Rooms / 14 Suites

**On Site Dining:** Bambara Kitchen + Bar, Cambridge Lobby Bar

**Meeting Space:** 6 Rooms / 13,500 square feet



Rated by Conde Nast Traveler as the “#3 Hotel in Boston”, Kimpton Marlowe Hotel is a uniquely smart choice when traveling anywhere in the Boston area. Newly renovated guest rooms, suites and event spaces plus hospitality and luxury make this boutique hotel both exceptional and convenient. Located in East Cambridge, Hotel Marlowe is just minutes from Harvard Square, MIT, downtown Boston, Logan Airport and more. The Kimpton Marlowe hotel is both accessible and pet-friendly. Guests can enjoy complimentary kayaks, paddleboards, public bikes, yoga mats and fitness classes. Inside the hotel, Bambara Kitchen + Bar is open for indoor and outdoor dining, pick up or delivery.

# Kimpton Marlowe Hotel

<i>Meeting Room</i>	<i>Square Ft.</i>	<i>Sq. Meters</i>	<i>Theatre</i>	<i>Classroom</i>	<i>Reception</i>	<i>Banquet</i>	<i>Conference</i>
Alexis Gallery	1342	125	100	48	130	90	34
Marlowe Boardroom	558	52	-	-	-	-	14
Muse Salon	1428	133	160	70	150	100	30
Serrano Ballroom	3402	316	320	160	350	250	-
Outdoor Courtyard	5000	465	-	-	350	250	-
Brandy Bar	684	64	-	-	50	40	-
	<b>12414</b>	<b>1153</b>					

# Le Méridien Cambridge - MIT



**Neighborhood:** Central Square

**Address:** 20 Sidney Street, Cambridge, MA 02139

**Phone:** 617-577-0200

**Website:** [lemeridiencambridge.com](http://lemeridiencambridge.com)

**Number of Rooms:** 210 Rooms / 14 Suites

**On Site Dining:** Amuse Restaurant & Bar

**Meeting Space:** 10 Rooms / 11,918 square feet

Le Méridien Cambridge - MIT has luxurious guest rooms and suites that offer a place of sanctuary and unmatched comfort. The hotel's 24-hour fitness center is fully equipped. At its chic restaurant, Amuse, you can treat yourself to classic French fare. Situated in the heart of University Park, Le Méridien is also surrounded by a culturally diverse area known for its cuisine. Central Square, a designated Cultural District by the Massachusetts Cultural Council, abounds with public art. Central Square also has unique, niche shopping options, and it is easily accessible from Logan Airport. Another highlight is that the hotel is minutes from the heart of Boston.



# Le Méridien Cambridge - MIT

<i>Meeting Room</i>	<i>Square Ft.</i>	<i>Sq. Meters</i>	<i>Theatre</i>	<i>Classroom</i>	<i>Reception</i>	<i>Banquet</i>	<i>Conference</i>
Jerome C. Hunsaker Ballroom	2418	225	220	120	280	190	70
Florence Luscomb Ballroom	2024	188	150	80	200	120	36
Robert B. Taylor	1558	145	75	25	170	100	25
Lan Jen Chu	575	53	40	25	40	40	16
Margaret L.A. MacVicar	600	56	40	25	40	40	16
Edward Pennell Brooks Boardroom	525	49	-	-	-	12	12
Lawrence B. Anderson Roof Garden	8008	744			250	180	
	<b>15708</b>	<b>1459</b>					

# Porter Square Hotel



**Neighborhood:** Porter Square

**Address:** 1924 Mass Ave, Cambridge, MA 02140

**Phone:** 888-252-0880

**Website:** [theportersquarehotel.com](http://theportersquarehotel.com)

**Number of Rooms:** 59 Rooms / 9 Suites

**On Site Dining:** Colette Wine Bistro

**Meeting Space:** N/A



Located moments away from Harvard Square, the Porter Square Hotel brings a fresh and exciting energy to Cambridge. As soon as you step into the bright, airy lobby, you'll see how the modern design blends the boutique hotel atmosphere with the comfort every traveler needs. An open patio and garden are the perfect spots for relaxing in the afternoon sun. Before exploring the city, head into Colette Wine Bistro to indulge in the hotel's French cuisine and cocktails. Colette is always buzzing with both locals and hotel guests. For guests' corporate meetings and private parties, The Porter Square Hotel also offers intimate gathering spaces.

# Residence Inn Boston Cambridge



**Neighborhood:** Kendall Square

**Address:** 6 Cambridge Center, Cambridge, MA 02142

**Phone:** 617-547-8504

**Website:** [cambridgeresidenceinn.com](http://cambridgeresidenceinn.com)

**Number of Rooms:** 221 Suites

**On Site Dining:** Theory Bar & Lounge

**Meeting Space:** 2 rooms / 1456 square feet



The Residence Inn by Marriott Boston Cambridge is located two subway stops from Harvard University, less than a mile from Massachusetts General Hospital, and within walking distance of MIT and major Cambridge biotech companies. The hotel has everything you need to thrive on long stays. Set a pace that suits you via guest suites designed with ample work space. The suites also have a fully equipped kitchen, supremely comfortable bedding and free high-speed Wi-Fi. To stay connected, hit the hotel's social events. And to stay relaxed, take advantage of the fitness center and a complimentary hot breakfast each morning.

# Residence Inn Boston Cambridge

<i>Meeting Room</i>	<i>Square Ft.</i>	<i>Sq. Meters</i>	<i>Theatre</i>	<i>Classroom</i>	<i>Reception</i>	<i>Banquet</i>	<i>Conference</i>
DOC Edgerton Room	1104	103	100	52	100	60	40
Executive Boardroom	352	33	-	-	-	-	12
	<b>1456</b>	<b>135</b>					



# Royal Sonesta Hotel Boston



**Neighborhood:** East Cambridge

**Address:** 40 Edwin H. Land Blvd, Cambridge, MA 02142

**Phone:** 800-766-3782

**Website:** [sonesta.com/boston](https://sonesta.com/boston)

**Number of Rooms:** 400 Rooms

**On Site Dining:** ArtBar, STUDIO Cafe & Bakery, MonteVerdi (Opening Spring 2024)

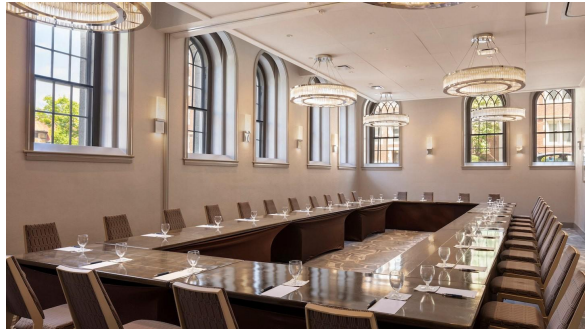
**Meeting Space:** 18 rooms / 28,000 square feet



Located on the Cambridge side of the Charles River, the Royal Sonesta is a AAA approved Four Diamond Hotel. It offers breathtaking views, regional cuisine and luxury accommodations chock full of contemporary art. All 400 well-appointed guest rooms and suites give travelers the comforts of home with first-class amenities. For those looking to experience the best Cambridge has to offer, there are many shops, museums and historical sites conveniently located near the Royal Sonesta. This upscale hotel also overlooks the Charles River as well as the stunning Boston city skyline.



# Sheraton Commander Hotel



**Neighborhood:** Harvard Square

**Address:** 16 Garden Street,, Cambridge, MA 02138

**Phone:** 617-547-4800

**Website:** [sheraton.com/commander](http://sheraton.com/commander)

**Number of Rooms:** 150 Rooms / 24 Suites

**On Site Dining:** Nubar

**Meeting Space:** 5 Rooms / 5,443 square feet

Built in 1927, the AAA Three Diamond rated Sheraton Commander Hotel has long been a landmark in Cambridge. With a quintessential location adjacent to Harvard Square, guests at the Sheraton Commander have easy access to Harvard University, the Harvard Art Museum, and the nearby downtown Boston. The hotel features 175 freshly renovated guest rooms complete with flat-panel LCD televisions, crisp bedding, and the interSheraton Sweet Sleeperbed made exclusively for Sheraton. You can stay connected with complimentary free high-speed internet access and a lobby equipped with Microsoft products. During your stay, also make sure to enjoy the hotel's seasonal and approachable neighborhood fare at Nubar Restaurant.

# Sheraton Commander Hotel

<i>Meeting Room</i>	<i>Square Ft.</i>	<i>Sq. Meters</i>	<i>Theatre</i>	<i>Classroom</i>	<i>Reception</i>	<i>Banquet</i>	<i>Conference</i>
Liberty Ballroom	1828	170	220	99	275	170	44
Revolution	1053	98	130	48	164	90	30
Independence	1664	155	180	63	250	120	36
Lexington	352	33	30	12	25	20	14
Concord	546	51	50	21	40	40	20
	<b>5443</b>	<b>506</b>					

# 907 Main



**Neighborhood:** Central Square

**Address:** 907 Main Street, Cambridge, MA 02139

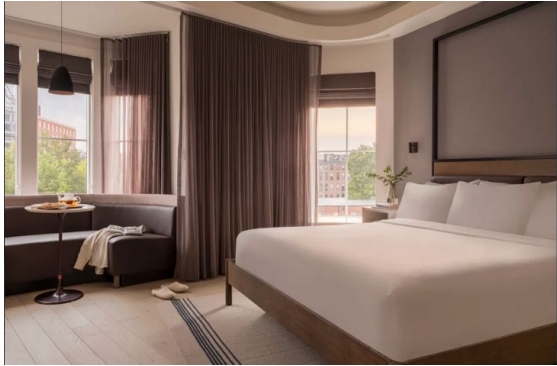
**Phone:** 617-300-0956

**Website:** [907main.com](https://907main.com)

**Number of Rooms:** 67 Rooms

**On Site Dining:** Althea (Opening Spring 2024)

**Meeting Space:** N/A



Cambridge's newest hotel, 907 Main, opened in fall 2020. Inspired by Margaret Fuller and the transcendentalist movement, 907 Main features exclusive offerings and partnerships that provide a sophisticated and refined stay while inspiring guests as well as locals to embrace the rebel within. 907 Main is in the heart of Central Square.

# Inns & B&B's

CAMBRIDGE CAMBRIDGE CAMBRIDGE CAMBRIDGE CAMBRIDGE

OFFICE FOR TOURISM

# A Cambridge House Inn



**Neighborhood:** West Cambridge

**Address:** 2218 Massachusetts Ave, Cambridge, MA 02140

**Phone:** 617-491-6300

**Website:** [acambridgehouse.com](http://acambridgehouse.com)

**Number of Rooms:** 33 Rooms

**On Site Dining:** Continental Breakfast

**Meeting Space:** N/A



A Cambridge House Inn is a lovely turn of the century B&B offering both Victorian and contemporary-style rooms. Many of the Victorian rooms have fireplaces, and both room types are equipped with private baths, cable TV and AC during summer months. Rates include continental breakfast, Wi-Fi and first come first serve parking. The inn is located just outside of Porter Square and within walking distance to the subway. It allows easy access to Harvard Square and Boston as well as Tufts University and MIT.

# A Friendly Inn at Harvard



**Neighborhood:** Harvard Square

**Address:** 1673 Cambridge Street, Cambridge, MA 02138

**Phone:** 617-547-7851

**Website:** [afinow.com](http://afinow.com)

**Number of Rooms:** 13 Rooms / 4 suites

**On Site Dining:** Continental Breakfast

**Meeting Space:** N/A

A Friendly Inn at Harvard is a Queen Anne-style house conveniently located two blocks from Harvard Square and the subway to downtown Boston and the airport. Across the street, enjoy a tennis court, swimming pool, library and museums. Within walking distance, discover movie theaters, restaurants, cafes, bookstores, brand-named stores and unique local shopping options. All rooms offer private baths, AC, TV and phone. Free parking, continental breakfast and 24-hour assistance are available to guests at A Friendly Inn. Chinese and French are also spoken at the inn.



# Irving House at Harvard



**Neighborhood:** Harvard Square

**Address:** 24 Irving Street, Cambridge, MA 02138

**Phone:** 877-547-4600

**Website:** [irvinghouse.com](http://irvinghouse.com)

**Number of Rooms:** 44 Rooms

**On Site Dining:** Continental Breakfast

**Meeting Space:** N/A



Irving House at Harvard has welcomed travelers to Cambridge since 1945. Irving House is a guesthouse on a quiet residential street two blocks from Harvard Yard. Their rates include Wi-Fi, off-street parking, delicious breakfast and afternoon tea. Food at Irving House is locally sourced as much as possible, and their operations are both environmentally and family friendly. Their room types include economical options with shared baths as well as family rooms with bunk beds and private baths.

# Prospects Place Bed & Breakfast



**Neighborhood:** Central Square

**Address:** 112 Prospect Street, Cambridge, MA 02138

**Phone:** 800-769-5303

**Website:** [prospectpl.com](http://prospectpl.com)

**Number of Rooms:** 1 Room / 2 Suites

**On Site Dining:** Continental Breakfast

**Meeting Space:** N/A



Prospect Place Bed & Breakfast is a historic residence dating back to the mid-nineteenth century. Prospect Place has been restored and maintained in the spirit of its original conception and building. Bed and breakfast guests are accepted by advance reservation on a first-come, first-served basis. The property is furnished with eclectic antiques and unique Persian rugs, and is a short walk from Harvard University and Massachusetts Institute of Technology.

# Other Meeting Venues

CAMBRIDGE CAMBRIDGE CAMBRIDGE CAMBRIDGE CAMBRIDGE

OFFICE FOR TOURISM

# American Academy of Arts & Sciences



**Neighborhood:** Porter Square

**Address:** 136 Irving Street, Cambridge, MA 02138

**Phone:** 617-576-5000

**Website:** [amacad.org](http://amacad.org)

Norton's Woods Conference Center at the American Academy of Arts & Sciences is a superior facility that can be tailored to your individual needs. Its spacious interior combines the charm of an English country house with a quiet luxury and elegance all its own.



A unique site for your next occasion, the Center can accommodate over 250 people for dinner and 350 for receptions. It is conveniently located in the heart of Cambridge on a secluded five-and-a-half acre wooded estate.

Conference facilities include executive conference rooms, 225-seat auditorium, three separate dining rooms, spacious atrium and hearth, and state-of-the-art audiovisual and communication systems. Their experienced and knowledgeable staff ensures superlative service with a disciplined attention to detail.

# Charles Riverboat Company



**Neighborhood:** East Cambridge

**Address:** 100 Cambridgeside Place, Cambridge, MA 02138

**Phone:** 617-621-3001

**Website:** [charlesriverboat.com](http://charlesriverboat.com)

The Charles Riverboat Company is Boston and Cambridge's only riverboat company offering private charters and sightseeing cruises along both the Charles River and Boston's Inner Harbor.



The Charles Riverboat Company has a fleet of five vessels available for private charter. They provide a unique setting for any corporate or social event, and capacities range from 6 - 145 depending on the vessel. Cocktail or Dinner Cruises can be customized to suit your group with a variety of available menus, bar packages and dockage locations around Boston and Cambridge.

# First Street Market



**Neighborhood:** East Cambridge

**Address:** 57 First Street, Cambridge, MA 02138

**Email:** [hello@firststreetmkt.com](mailto:hello@firststreetmkt.com)

**Website:** [ambacambridge.com/first-street-market](http://ambacambridge.com/first-street-market)

A new event and meeting space in Cambridge! Located next to Amba at 57 First Street is First Street Market. The space will be multipurpose - hosting farmers markets, maker markets, and events and meeting space with full catering available from Cambridge Street Hospitality Group as well as a 12 seat bar.

# Gutman Conference Center

**Neighborhood:** Harvard Square

**Address:** 6 Appian Way, Cambridge, MA 02138

**Phone:** 617-495-4225

**Website:** [Gutman Conference Center](#)



The Gutman Conference Center is a full-service conference and meeting facility ideally located in the heart of Harvard Square. You can find the center on the ground floor of the Monroe C. Gutman Library at the Harvard Graduate School of Education. The Gutman Conference Center is just minutes from hotels, restaurants, public transportation, parking facilities and in the very heartbeat of the Harvard academic community.

Amenities include logistical consultation, catering, and audiovisual equipment rentals and support. The center can accommodate capacities from 65 - 350 attendees.

# Harvard Art Museum

**Neighborhood:** Harvard Square

**Address:** 32 Quincy Street, Cambridge, MA 02138

**Phone:** 617-495-9400

**Website:** [harvardartmuseums.com](http://harvardartmuseums.com)



Discover the rich collections of the Fogg, Busch- Reisinger and Arthur M. Sackler Museums. They are united in a state-of-the-art facility, Harvard Art Museums. The three museums' landmark building on the Harvard University campus provides spaces for research, teaching and learning – all of which are at the heart of their mission. Visitors can learn about research connected to the objects on display, explore new ideas in the galleries and observe leading conservators at work. In the unique Art Study Center, visitors have hands-on experiences with a wide range of objects from the collections.

There are five different areas that can be utilized for meetings or events, and range in capacity from 80 - 400.



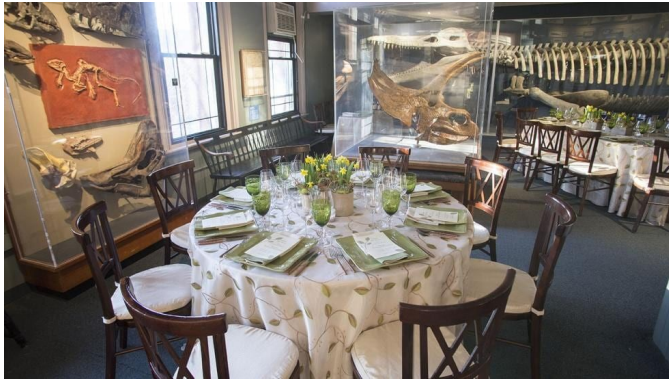
# Harvard Museum of Natural History

**Neighborhood:** Harvard Square

**Address:** 26 Oxford Street, Cambridge, MA 02138

**Phone:** 617-495-3045

**Website:** [hmn.harvard.edu/](http://hmn.harvard.edu/)



The Harvard Museum of Natural History provides a marvelous setting for a variety of events. The Museum of Natural History has 17 galleries with fascinating exhibitions. They form the perfect backdrop for a distinctive reception or dinner.

All Harvard Museum of Natural History event rentals include full access to special exhibitions and galleries like the Glass Flowers gallery as well as the zoological and mineralogical galleries.

Event & meeting capacities range from 30 - 400+.

# MIT Museum

**Neighborhood:** Kendall Square

**Address:** Gambrill Center, 314 Main Street, Cambridge, MA 02142

**Phone:** 617-253-5927

**Website:** [mitmuseum.mit.edu](http://mitmuseum.mit.edu)



The museum offers a number of options to suit your guest list and event type. The ground floor lobby, featuring inspired architectural detail is a perfect event destination, while the second-floor dedicated event room, equipped with state-of-the-art AV equipment is ideal for daytime or evening meetings or functions. Or opt to rent the entire museum for an awe-inspiring backdrop to an unforgettable evening.

Guests will have access to galleries, art installations, and their dramatic *Exchange* program space with soaring ceilings and stadium seating.

# Multicultural Arts Center



**Neighborhood:** East Cambridge

**Address:** 41 Second Street, Cambridge, MA 02141

**Phone:** 617-253-5927

**Website:** [multiculturalartscenter.org](http://multiculturalartscenter.org)

The Multicultural Arts Center is a non-profit corporation that was founded as an arts center focused on helping diverse populations better understand one another. Since its founding in 1978, the center has presented multicultural visual and performing arts programs. It educates the community about diversity and make its spaces available to artists and groups that might not otherwise have access to a professionally equipped facility.

At the Multicultural Arts Center, a theater is available for private rentals. Perfect for any occasion, the center also includes two galleries and a kitchen that is available for weddings, bar mitzvahs, private parties, corporate gatherings and non-profit events. Capacities range from 40 - 200.

# Museum of Science

**Neighborhood:** East Cambridge

**Address:** Science Park, Boston, MA 02114

**Phone:** 617-723-2500

**Website:** [mos.org/events/private-events](https://mos.org/events/private-events)



The Museum of Science lends itself to a wide range of events: business meetings, private or corporate receptions, cocktail parties, banquets, weddings, christenings, showers, bridal luncheons, rehearsal dinners, bar and bat mitzvahs, and more. Event and meeting capacity goes up to 4,500 attendees with an entire museum buyout.

A true departure from the typical social or corporate setting, the museum offers a moveable feast of engaging experiences. Permanent attractions are accented by an ever-changing cavalcade of traveling exhibits, films and shows. Treat your guests to a fresh take on event surroundings and entertainment offerings.

# The Foundry



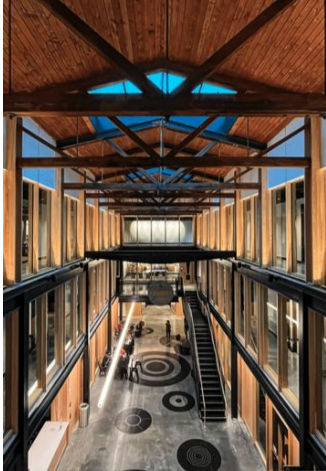
**Neighborhood:** Kendall Square

**Address:** 101 Rogers Street, Cambridge, MA 02138

**Phone:** 857-998-2063

**Website:** [cambridgefoundry.org](http://cambridgefoundry.org)

The Foundry, a brick and timber frame industrial building built in 1890, has been repurposed into a creative, innovative and collaborative multipurpose space.



Featuring four different event spaces, each space offers customizable layouts to align with your event needs. Event spaces include the Performance Space, the Community Hall, the large Multi-Purpose Room and the Yard. Private and public rentals are available.

Capacities run from 300 standing to 175 seated, include outdoor spaces, a “Food lab”, skylights, AV equipment and more.

CAMBRIDGE CAMBRIDGE CAMBRIDGE CAMBRIDGE CAMBRIDGE